

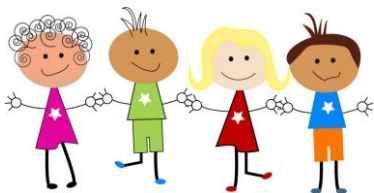


Mutual Respect and Tolerance

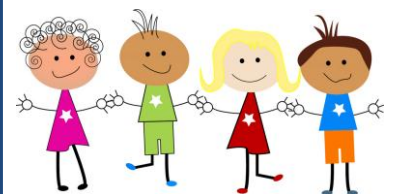
We are **encouraged** to understand different practices of faiths, cultures and beliefs.

We are taught about all major religions in our RE lessons.

We use Restorative Justice as a way of talking through our problems and understanding each other's perspective.



How we are taught to respect and understand those of other faiths, cultures and beliefs.



We listen to stories and visitors from other faiths, cultures and beliefs during Collective Worship and consider how these might apply to our own experiences.

We are given opportunities to discuss our relationships with others during PSHE activities.

We are encouraged how to be **compassionate** towards others through **Love and Friendship**.

We are an inclusive school. We value and **respect** each other and understand each other's differences.